

## Benchmark 6000 Condensing Hydronic Boilers



The AERCO Benchmark 6000 Water Boiler is designed for condensing application in any closed loop hydronic system. It delivers 15:1 burner turndown to match energy input directly to fluctuating system loads to yield the highest possible seasonal efficiencies. And no other product packs as much capacity into such a small footprint.

To minimize emissions, the BMK6000 is fitted with a low NOx burner whose emissions will consistently measure <20 ppm of NOx corrected to 3% excess oxygen at all firing rates. The fully modulating burner also maintains AERCO standards for energy efficiency, longevity, reliability and construction quality.

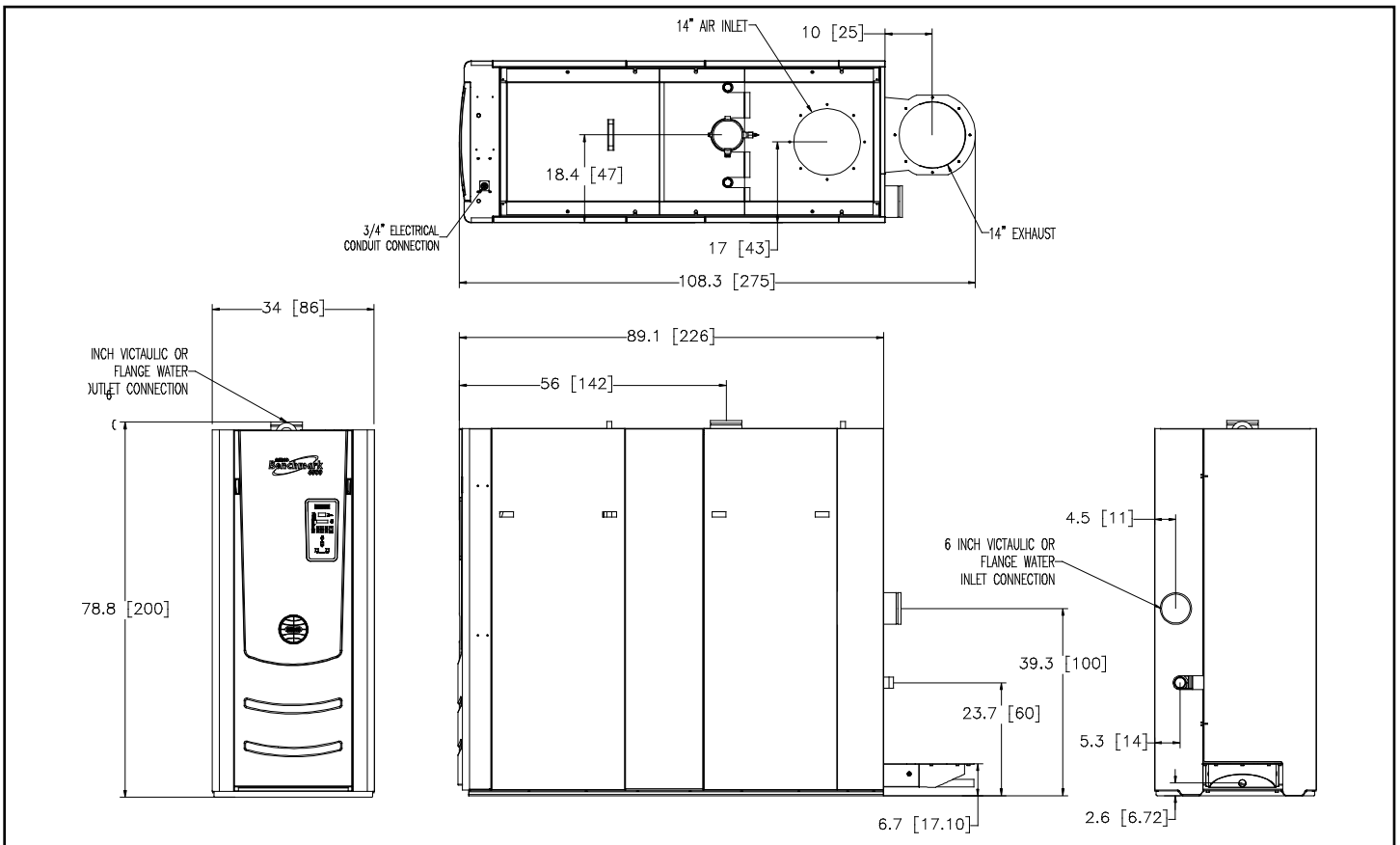
The BMK6000 comes standard with AERCO's Patent Pending, Oxygen Level (O<sub>2</sub>) monitoring system. This monitoring system, designed to display the O<sub>2</sub> level directly on the unit in real time, can also be remotely monitored via Modbus giving the customer the ability to measure the emissions level and fuel economy of the boiler without traditional combustion calibration devices.

The BMK6000 can be used as an individual unit or in modular arrangements and offers selectable modes of operation. In addition to controlling the boiler according to a constant set point, indoor/outdoor reset schedule or 4-20mA signal, one or more units can be integrated via Modbus communications protocol to AERCO's multiple boiler management system (BMS) or a facility-wide Energy Management or Building Automation System.

### FEATURES:

- Natural Gas
- 15:1 Turndown Ratio (7%)
- Oxygen Level (O<sub>2</sub>) Monitoring Standard
- Stainless Steel Fire Tube heat exchanger
- Capable of variable primary flow Installations
- NOx Emissions 20 ppm or less @ all firing rates
- Compact Footprint (79"H x 34"W x 108"D)
- Precise Temperature Control
- Sealed Combustion Capable
- Easy Open Access for Service
- Acceptable vent materials AL29-4C
- Reliable Quiet Operation
- Controls Options
  - Constant Setpoint
  - Indoor/ Outdoor Reset
  - Remote Setpoint
  - 4-20mA signal or ModBus

## DIMENSIONS:



## RATINGS AND DIMENSIONS:

Model	MBH Input	MBH Output	Efficiency 80° to 180°F	Turndown	Width	Depth	Height	Water Volume (gal)	Weight (dry) lbs.	Weight (wet) lbs.
BMK6000	6000 mbh	5610 mbh	92.5%	15:1	2'10"	9'	6'7"	110	3,000	3,920

## SPECIFICATIONS:

ASME Working Pressure..... 80 PSIG  
 Electrical Options..... 208-230V/3/60 30 AMP  
 ..... 460/3/60 15 AMP  
 Gas Requirements:  
 FM / DBB (IRI) Gas Train... 20" W.C. to 2psi @ Full Load  
 Water Connections ... 6" Victaulic with 150lbs flange option  
 Vent/ Air Intake Connections..... 14 Inch  
 Communications Protocol ..... MODbus

Gas Connection ..... 2" NPT  
 Min./Max. Water Flow ..... 75gpm / 600 gpm  
 Water Pressure Drop ..... 4.0psig@ 570GPM  
 Control Range ..... 50°F to 190°F  
 Ambient Temperature ..... 0°F to 130°F  
 Standard Listings & Approvals ... UL, CUL, CSD-1, ASME  
 Gas Train Options..... FM Compliant or  
 Factory Installed DBB (IRI)

\*Up to 2000' Altitude

\*\*Output is dependent upon return water temp. and firing rate.

Represented By:



WATER HEATERS • BOILERS • PARTS & ACCESSORIES  
 AERCO INTERNATIONAL, INC.  
 100 ORITANI DR. • BLAUVELT, NY 10913  
 (845) 580-8000 • FAX (845) 580-8090  
 www.aerco.com

Specifications subject to change without prior notice.  
 Consult website or contact AERCO.  
 BMK6000 05/2012 NY